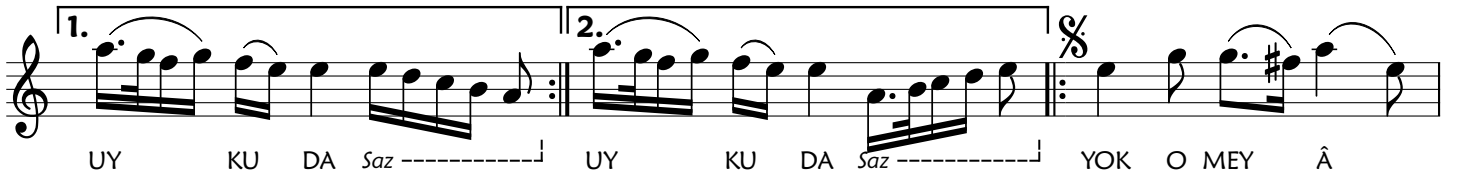
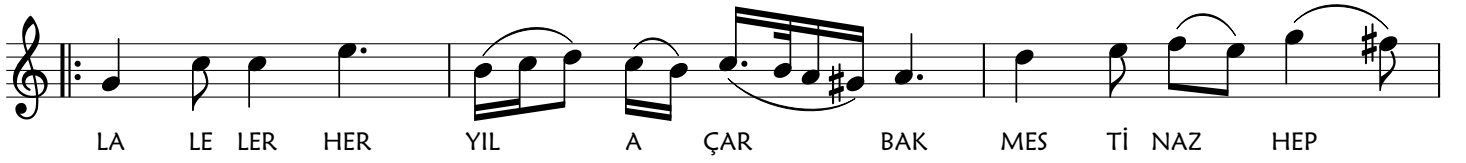
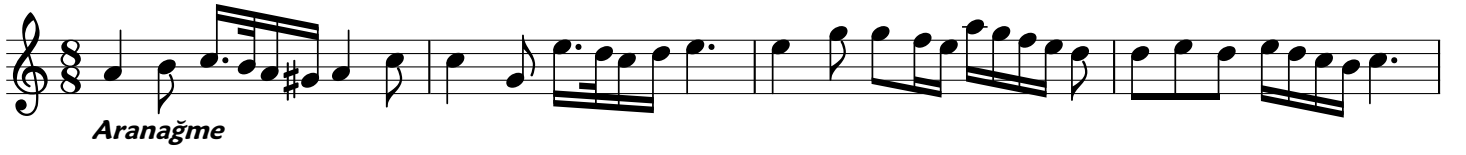


BUSELİK ŞARKI

Laleler Her Yıl Açar Bak Mest-i Naz Hep Uykuda

Söz: Mahmut Nedim GÜNTEL
Müzik: Teoman ALPAY

Usulü: Müsemmen



LALELER HER YIL AÇAR BAK MESTİ NAZ HEP UYKUDA
YOK O MEY ÂLEMLERİNDEN BİR NEFES NEY GÖKSU'DA
HİÇ DEĞİŞMEZ BAHTI BEZMİN, AKİBET AH HEP BUDUR
YOK O MEY ÂLEMLERİNDEN BİR NEFES NEY GÖKSU'DA