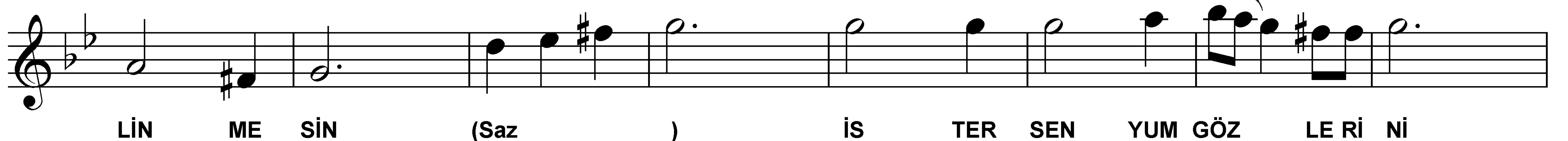
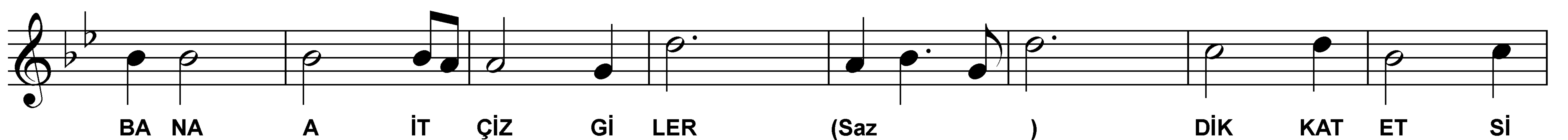
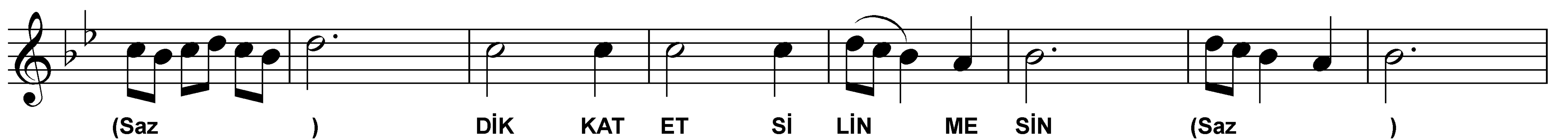
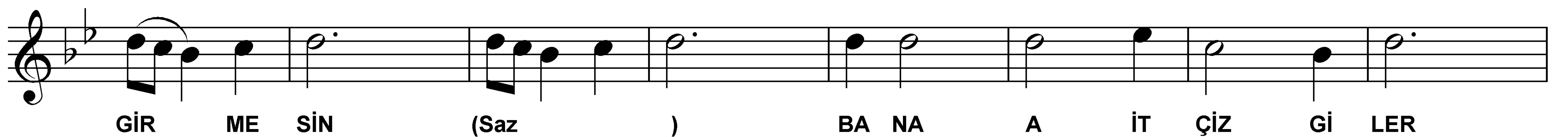
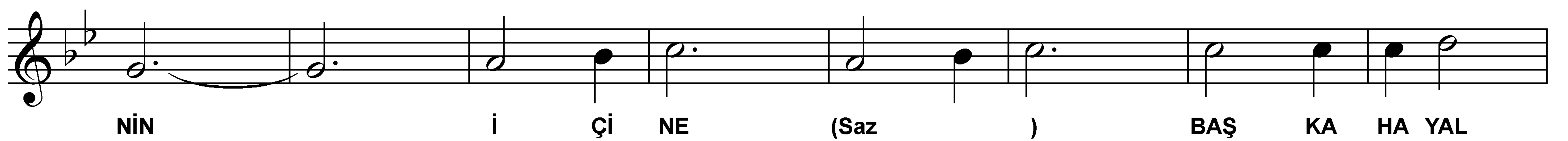
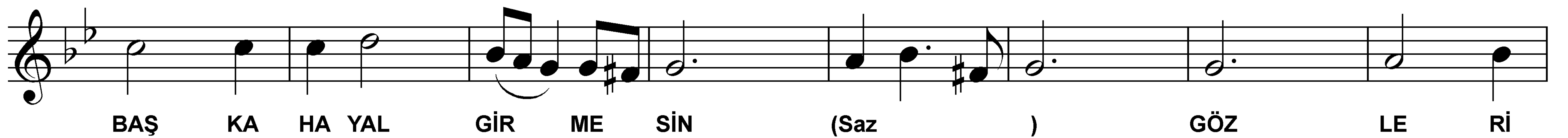
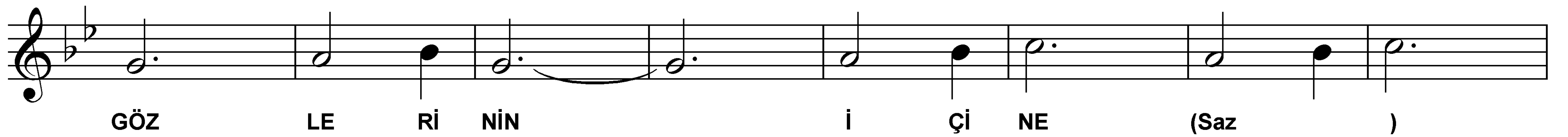
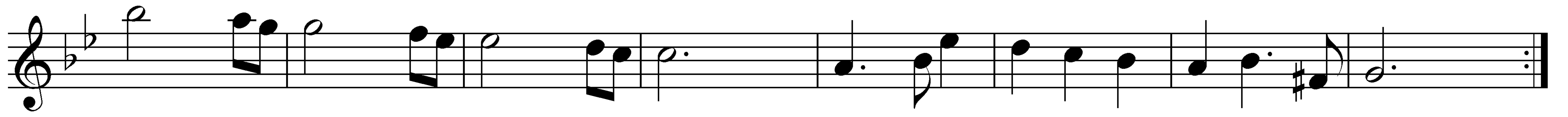
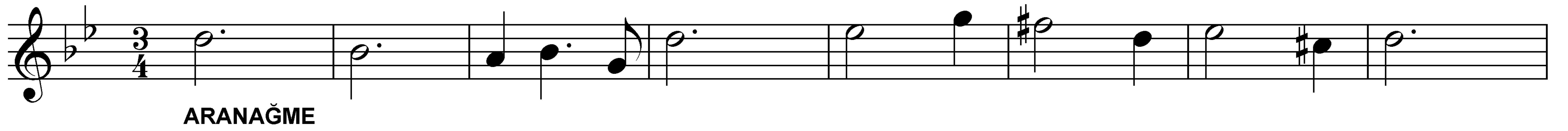


Semai

♩=180

NİHAVEND ŞARKI
Gözlerinin içine başka hayal girmesinBeste : Zeki MÜREN
Söz : Sabih GÖZEN

NİHAVEND ŞARKI

Semai

Gözlerinin içine başka hayal girmesin

Beste : Zeki MÜREN
Söz : Sabih GÖZEN

BEN DEN EV VEL BAŞ KA SI (Saz) BA KIP SE Nİ
GÖR ME SİN (Saz) BEN DEN EV VEL BAŞ KA SI
(Saz) BA KIP SE Nİ GÖR ME SİN (Saz)
(Saz) KIS KA NIR DIM
SE Nİ BEN (Saz) KEN Dİ GÖ ZÜM DEN Bİ LE
Ağırlaşarak (Saz) NA SIL VE RİR DİM SE Nİ BİR GÜN YA BAN
CI E LE (Saz) SA NA GE LEN YOL LAR DA
(Saz) DA İ MA BE Nİ BEK LE (Saz)

Reşat Önal

GÖZLERİNİN İÇİNE BAŞKA HAYAL GİRMESİN
BANA AİT ÇİZGİLER DİKKAT ET SİLİNMESİN
İSTERSEN YUM GÖZLERİNİ TIPKI DÜŞÜNÜR GİBİ
BENDEN EVVEL BAŞKASI BAKIP SENİ GÖRMESİN

KISKANIRDIM SENİ BEN KENDİ GÖZÜMDEN BİLE
NASIL VERİRDİM SENİ BİR GÜN YABANCI ELE
SANA GELEN YOLLARDA DAİMA BENİ BEKLE
BENDEN EVVEL BAŞKASI BAKIP SENİ GÖRMESİN