

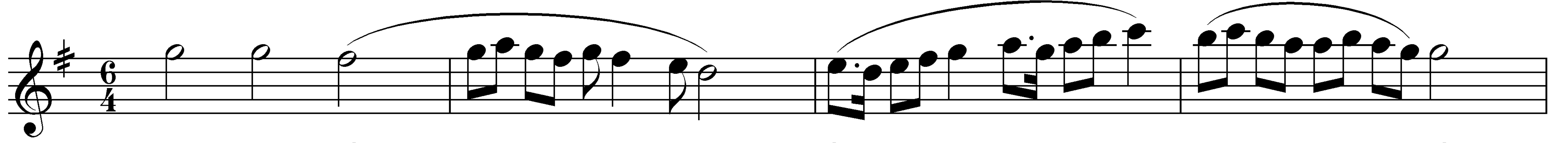
MAHUR BESTE

Beste : Reşat Önal

Yürük Semai

Gerçi kim ehl-i dile hoşça mekandır Dünya

Söz : İlhami (III. Selim)

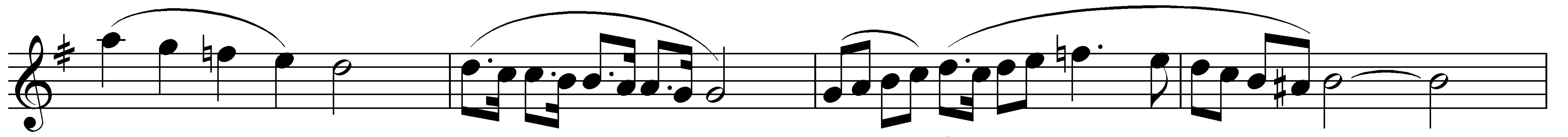


AH GER Çİ
AH GE Hİ
AH HER KE

KİM
ZEV
SİN

EH
KÜ
KAV

Lİ
TA
Lİ



Dİ
RÂ
NE

LE
BÜ
AL

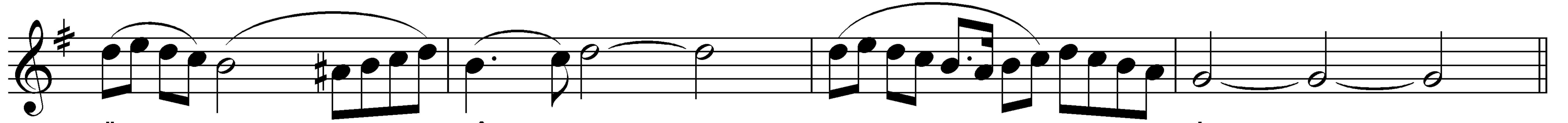
HOŞ
GÂ
DAN

ÇA
Hİ
MA

ME
YA
YA

KÂN
MAN
LAN

DIR
DIR
DIR



DÜN
DÜN
DÜN

YA
YA
YA

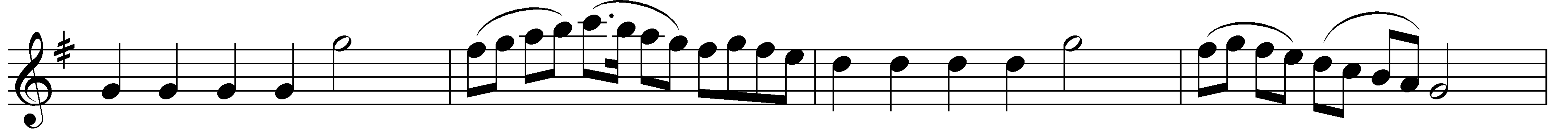
CÂ
CÂ
CÂ

NİM
NİM
NİM

E
E
E

FEN
FEN
FEN

DİM
DİM
DİM

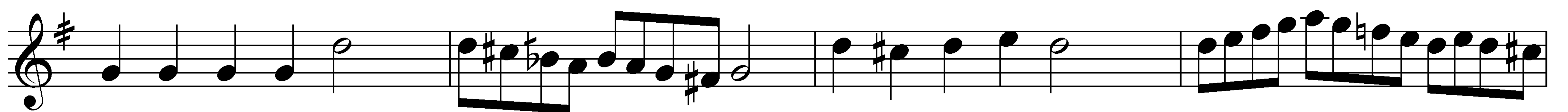


TİR YE LE LE LEL
TİR YE LE LE LEL
TİR YE LE LE LEL

LEL LEL Lİ
LEL LEL Lİ
LEL LEL Lİ

TİR YE LE LE LEL
TİR YE LE LE LEL
TİR YE LE LE LEL

LE LEL Lİ
LE LEL Lİ
LE LEL Lİ

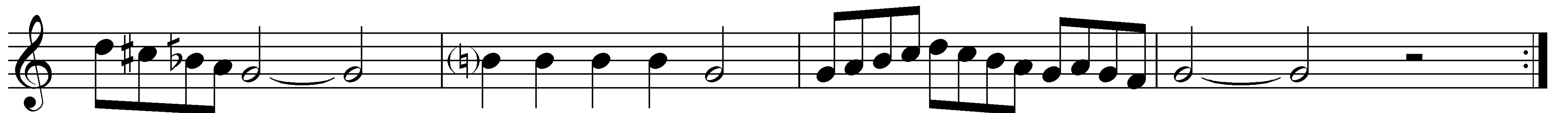


CÂ NİM YE LE LEL
CÂ NİM YE LE LEL
CÂ NİM YE LE LEL

LEL LEL Lİ
LEL LEL Lİ
LEL LEL Lİ

Mİ RİM YE LE LEL
Mİ RİM YE LE LEL
Mİ RİM YE LE LEL

CÂ NİM YE
CÂ NİM YE
CÂ NİM YE

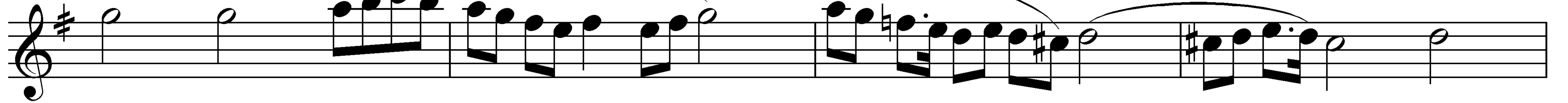


LEL Lİ
LEL Lİ
LEL Lİ

CÂ NİM YE LE LEL
CÂ NİM YE LE LEL
CÂ NİM YE LE LEL

LEL LEL LEL Lİ
LEL LEL LEL Lİ
LEL LEL LEL Lİ

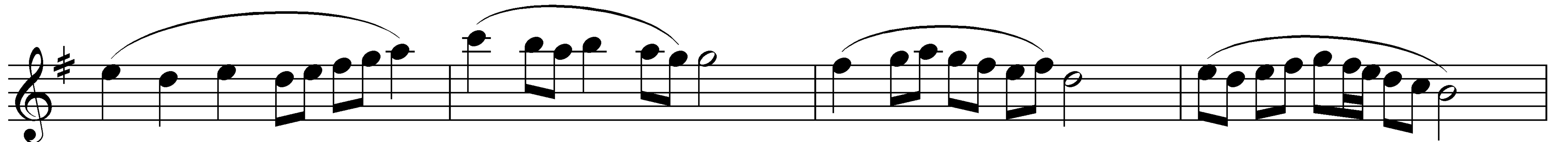
Meyan



AH KEN Dİ

AH VÂ

Lİ NE



BAK

Â

LE

Mİ

MA

MÜR

MAHUR BESTE Beste : Reşat Önal
Yürük Semai Söz : İlhami (III. Selim)
Gerçi kim ehl-i dile hoşça mekandır Dünya

SAN MA CÂ NIM E FEN DİM

TİR YE LE LE LEL LEL LEL Lİ TİR YE LE LE LEL LE LEL Lİ

CÂ NIM YE LE LEL LEL LEL Lİ Mİ RİM YE LE LEL CÂ NIM YE

LEL Lİ CÂ NIM YE LE LEL LEL LEL LEL Lİ

Reşat Önal

GERÇİ KİM EHL-İ DİLE HOŞÇA MEKÂNDIR DÜNYA
 GEHİ ZEVK-Ü TARAB-Ü GÂHİ YAMANDIR DÜNYA
 KENDİ AHVÂLINE BAK ÂLEMİ MA'MÛR SANMA
 HERKESİN KAVLİNE ALDANMA YALANDIR DÜNYA