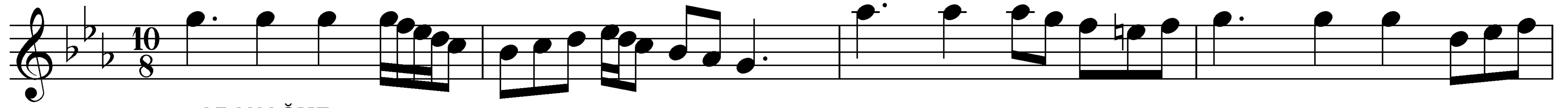


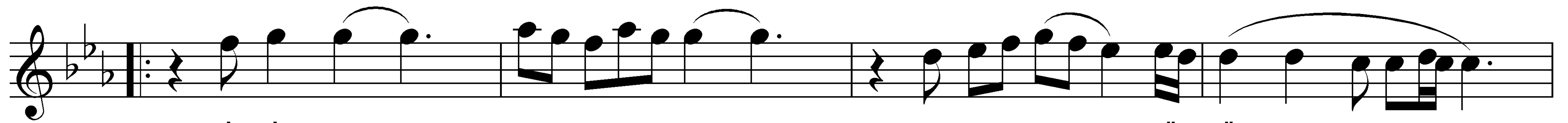
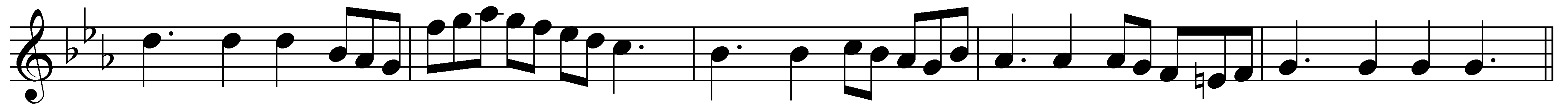
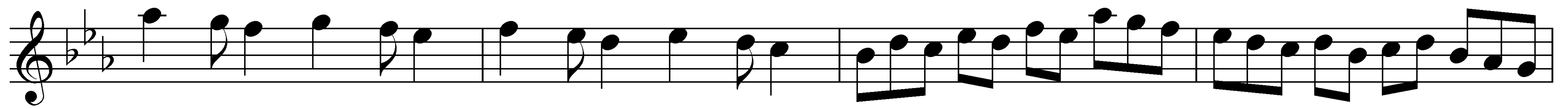
## Curcuna-Semai

KÜRDİLİHİCAZKAR ŞARKI  
İçince şarabı ezelde gönülBeste: Arif Sami TOKER  
Söz : Ziya YAZGAN

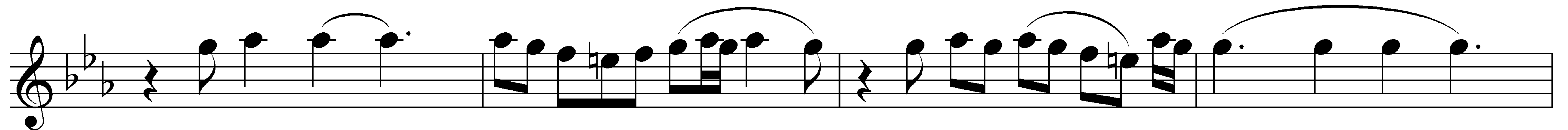
♩ = 108



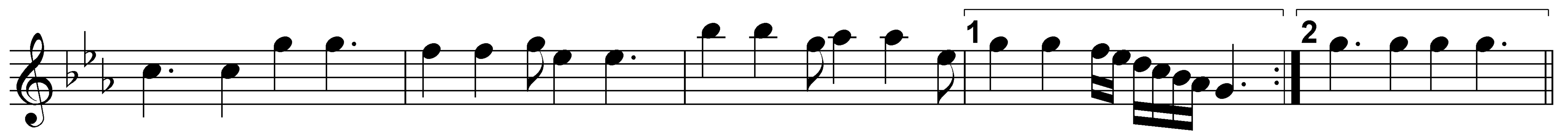
ARANAĞME



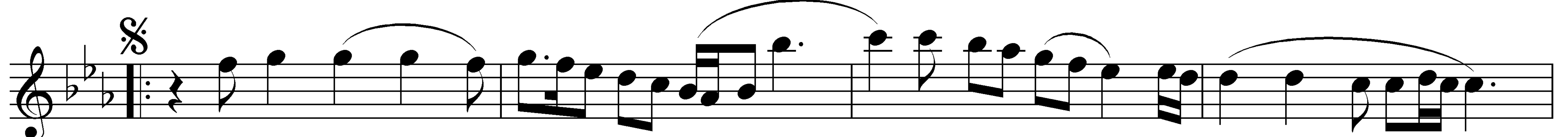
İ ÇİN CE ŞA RA BI E ZEL DE GÖ NÜL



İ ÇİN CE ŞA RA BI E ZEL DE GÖ NÜL



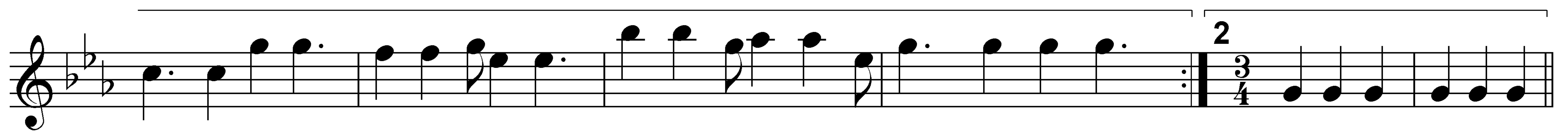
(Saz )



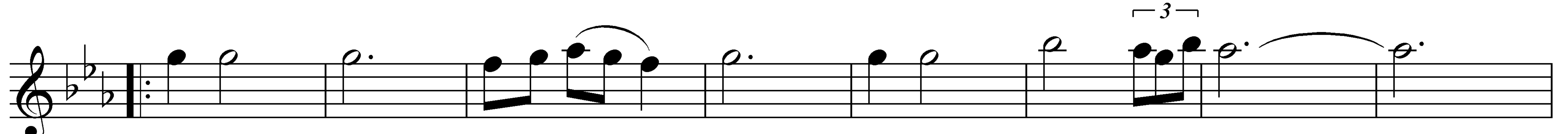
TA KIL DI KAL DI BİR GÜ ZEL DE GÖ NÜL



TA KIL DI KAL DI BİR GÜ ZEL DE GÖ NÜL



(Saz )



NE YER DE SE MA DA NE SER DE GÖ NÜL

Curcuna  
Semai

**KÜRDİLİHİCAZKAR ŞARKI**  
İçince şarabı ezelde gönül

Beste : Arif Sami TOKER  
Söz : Ziya YAZGAN

BİR ÇAP KIN BA KIŞ LI GÜ ZEL DE GÖ NÜL (Saz ) NÜL

KALP LE RE O FÜ SUN O KU NU A TAN

Sİ NE İ BİL LU RU CA NA CAN KA TAN

BİR BA KIŞ LA BİN BİR GÖ NÜL KA NA TAN

O ÇAP KIN BA KIŞ LI GÜ ZEL DE GÖ

NÜL (Saz)

Reşat Önal

İÇİNCE ŞARABI EZELDE GÖNÜL  
TAKILDI KALDI BİR GÜZELDE GÖNÜL  
NE YERDE, SEMADA NE SERDE GÖNÜL  
BİR ÇAPKIN BAKIŞLI GÜZELDE GÖNÜL  
KALPLERE O FÜSUN OKUNU ATAN  
SİNE-İ BİLLURU CANA CAN KATAN  
BİR BAKIŞLA BİN BİR GÖNÜL KANATAN  
O ÇAPKIN BAKIŞLI GÜZELDE GÖNÜL